

Vacuum Safety Valve CVK SERIES

How To Order

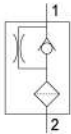


CVK - **A** **01G**

① Connect Direction
② Connect Thread

① Connect Direction □		② Connect Thread ○	
A	External thread connection	01G	G1/8
B	Internal thread connection	02G	G1/4
		03G	G3/8
		04G	G1/2

Symbol



Features

- Aluminum shell, brass bottom, with filter.
- Used for several application occasion of vacuum system and prevent the influence to system if without touch workpiece or break away from the workpiece.
- Turn off the suction cup not used, reduce vacuum leakage.
- Use the same adsorption system to move the workpiece with different size and shape, the system can be used in different occasions.

Specification

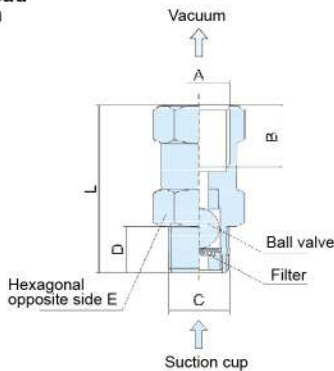
Blowing pressure when break vacuum: 0.5Mpa

Item	Model	CVK-□ 01G	CVK-□ 02G	CVK-□ 03G	CVK-□ 04G
Suction Flow When Vacuum Level is 30kPa (L/min)		2.3	2.9	7.3	8.1
Suction Flow When Vacuum Level is 60kPa (L/min)		2.5	3.4	8.0	9.0
Max. Blowing Pressure When Break Vacuum (L/min)		310	340	590	790

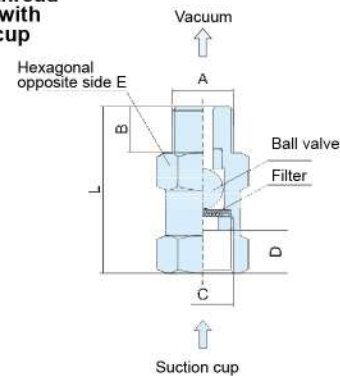
Dimension

(mm)

External thread connect with suction cup



Internal thread connect with suction cup



Model	A	B	C	D	E	L
CVK-A01	G1/8	8	G1/8	8.5	14	34
CVK-A02	G1/4	10	G1/4	11	17	36
CVK-A03	G3/8	10	G3/8	12	22	39
CVK-A04	G1/2	12	G1/2	14	27	41

Model	A	B	C	D	E	L
CVK-B01	G1/8	8.5	G1/8	8	14	34
CVK-B02	G1/4	11	G1/4	10	17	36
CVK-B03	G3/8	12	G3/8	10	22	39
CVK-B04	G1/2	14	G1/2	12	27	41